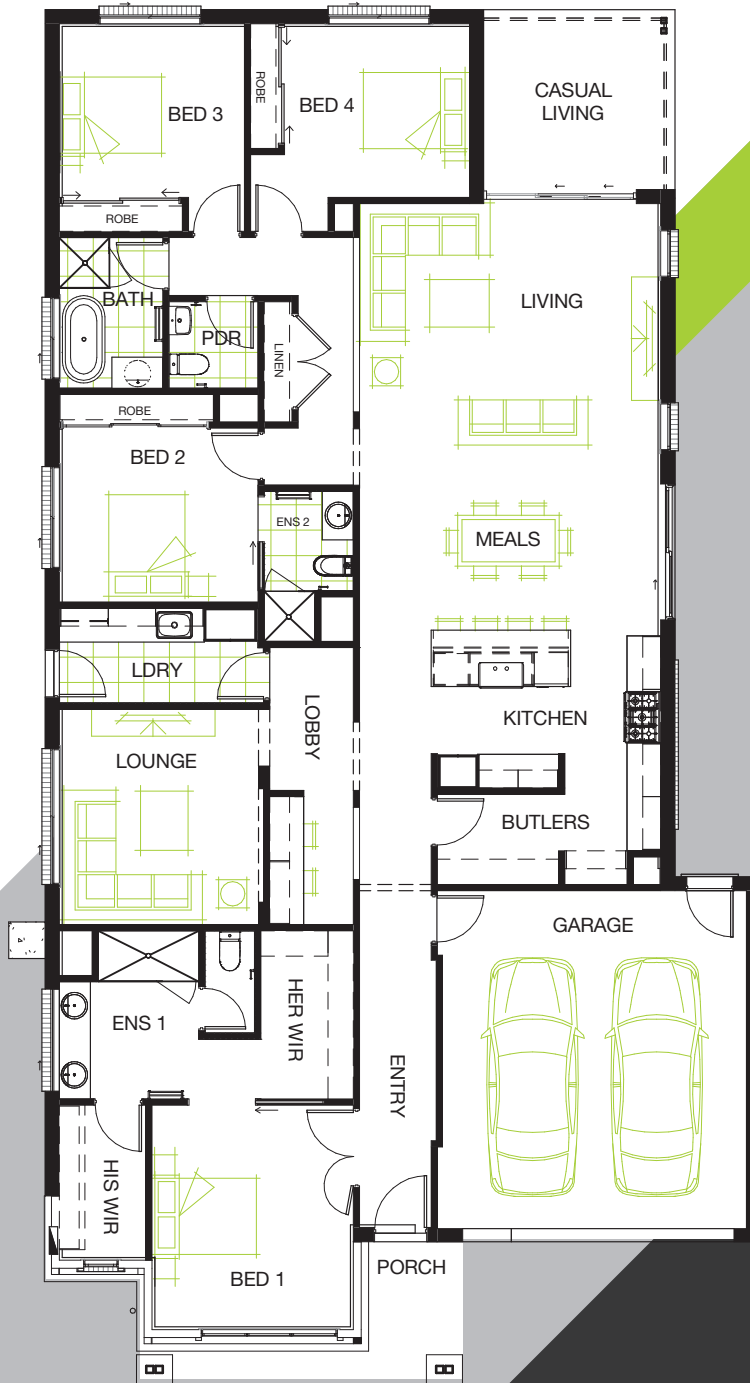


# PORTSEA 290



## LIVING AREAS

Living/Meals:	7570 mm x 5360 mm
Lounge:	3840 mm x 3640 mm
Casual Living:	3190 mm x 3390 mm

## BEDROOMS

Bedroom 1:	4000 mm x 3590 mm
Bedroom 2:	3100 mm x 3540 mm
Bedroom 3:	3700 mm x 3300 mm
Bedroom 4:	3100 mm x 3300 mm

## DIMENSIONS

External Length:	24.34 m
External Width:	12.68 m
Minimum Block Width:	14.00 m
Minimum Block Length:	30.00 m
Total:	267.23 m <sup>2</sup> / 28.93 sqm

Sales Hotline: 1800 60 40 11 | [www.longislandhomes.com.au](http://www.longislandhomes.com.au)