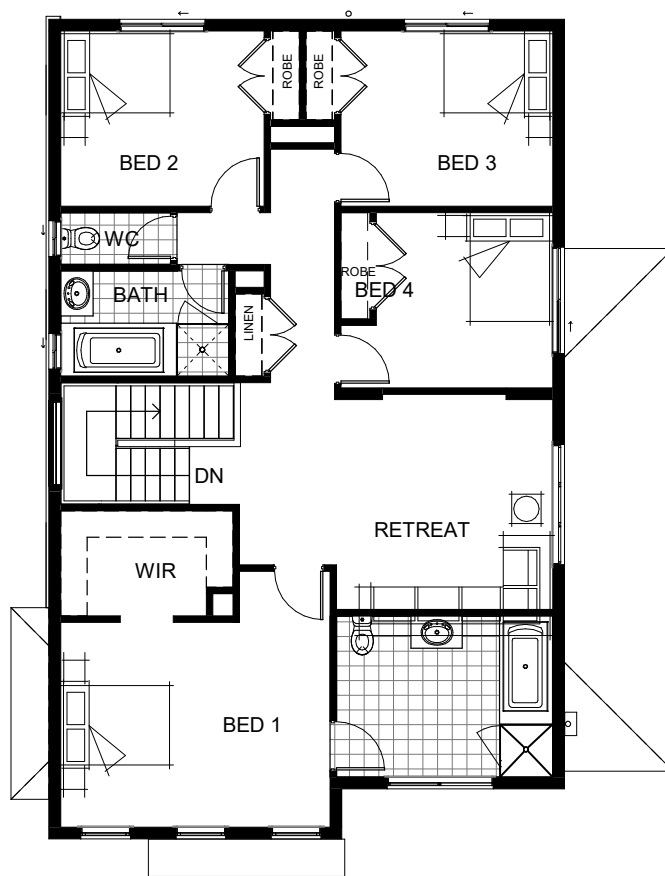
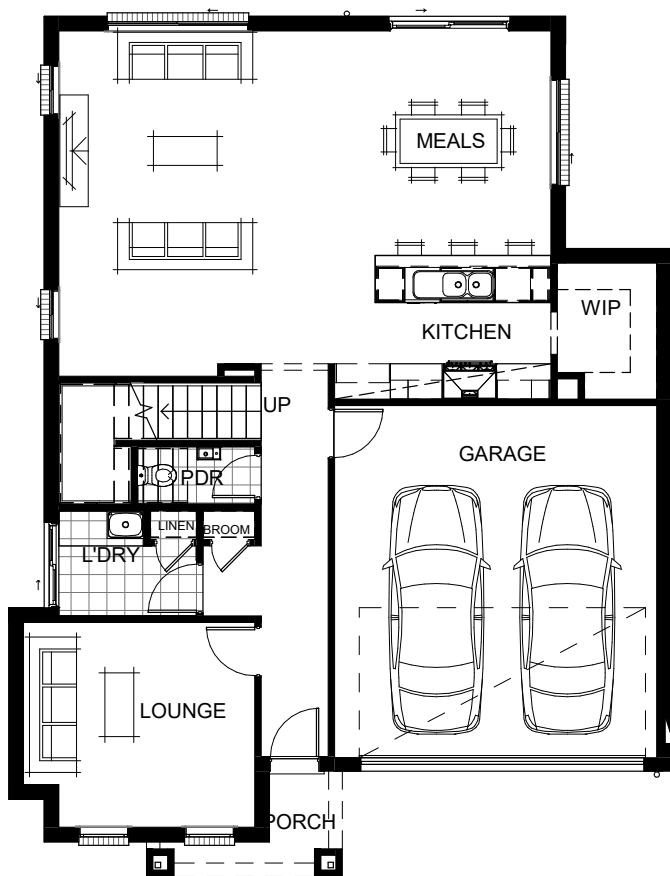


PARIS 280 MKII



| LIVING AREAS | | BEDROOMS | | DIMENSIONS | |
|--------------|-------------------|------------|-------------------|-----------------------|-----------------------------------|
| Living: | 5890 mm x 2720 mm | Bedroom 1: | 4370 mm x 4600 mm | External Length: | 14.63 m |
| Meals: | 3950 mm x 3700 mm | Bedroom 2: | 3000 mm x 3480 mm | External Width: | 11.27 m |
| Lounge: | 3500 mm x 3950 mm | Bedroom 3: | 3000 mm x 3620 mm | Minimum Block Length: | 21.00 m |
| Retreat: | 3680 mm x 5350 mm | Bedroom 4: | 3000 mm x 3020 mm | Minimum Block Width: | 12.50 m |
| | | | | Total: | 259.07 m ² / 27.89 SQM |

Sales Hotline: 1800 60 40 11 | www.longislandhomes.com.au