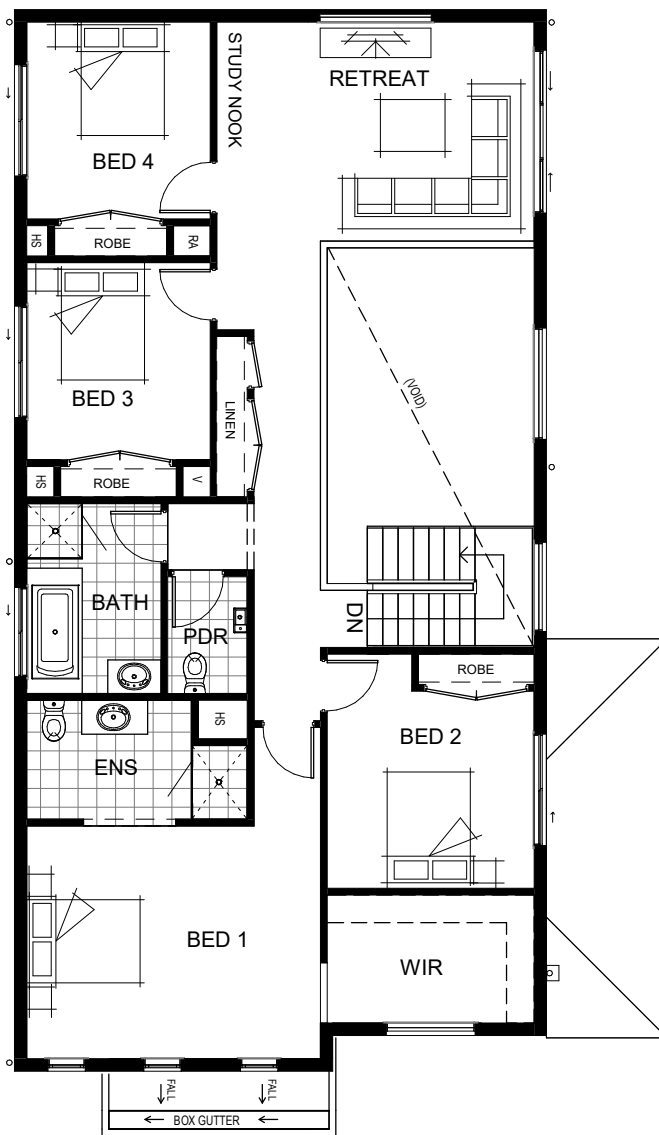
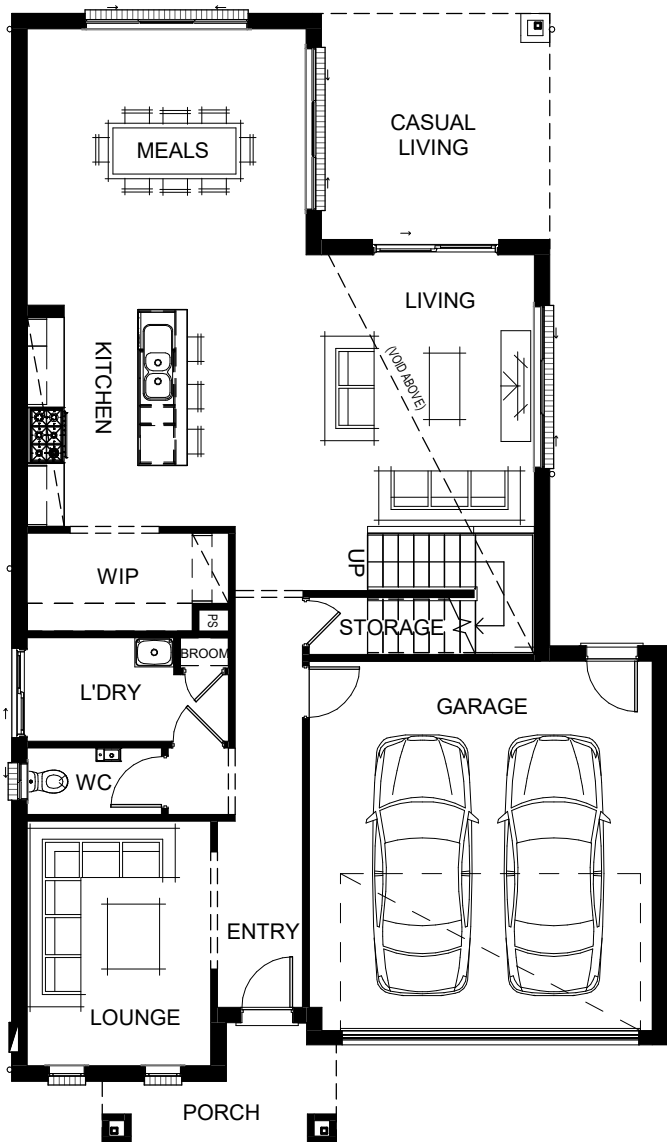


PALM COVE 340



LIVING AREAS		BEDROOMS		DIMENSIONS	
Living:	4430 mm x 5560 mm	Bedroom 1:	5400 mm x 4790 mm	External Length:	18.34 m
Meals:	4505 mm x 4550 mm	Bedroom 2:	3910 mm x 3380 mm	External Width:	10.65 m
Lounge:	3990 mm x 3000 mm	Bedroom 3:	3220 mm x 3000 mm	Minimum Block Length:	24.00 m
Retreat:	3580 mm x 5170 mm	Bedroom 4:	3220 mm x 3000 mm	Minimum Block Width:	12.00 m
Casual Living:	3200 mm x 3240 mm			Total:	312.58 m ² / 33.65 SQR

Sales Hotline: 1800 60 40 11 | www.longislandhomes.com.au

© COPYRIGHT. Long Island Homes. Brochure is a representative guide only and may depict upgraded colours, finishes, facades and/or features. Please refer to your friendly sales consultant for helpful guidance and assistance, an exact list of inclusions and master drawings for accurate features and dimensions. Builder Registration CDB-U 58094.